



# DELTA COUNTY 4-H

TRA NEWSLETTER SUPPLEMENT - FEBRUARY 2009



Our greatest natural resource is the minds of our children.

Walt Disney

## 2009 Beef Roast Ticket Sales Contest!



You could win up to \$100.00!



This year, in conjunction with our regular MEMBER ticket sales contest, we are sponsoring an additional prize for the overall member ticket sales winners!

1<sup>st</sup> prize - \$50.00

2<sup>nd</sup> prize - \$25.00

3<sup>rd</sup> prize - \$15.00

This means if you win first place in your age division and first place overall you will receive a total of \$100.00!


There is also a club contest! The clubs who sell the most tickets will win \$50.00, \$30.00, \$20.00 respectively.

Join in the fun, sell tickets like crazy, and let us show YOU the money!!!

THE DELTA COUNTY 4-H COUNCIL HAS APPROVED NEW PRIZE AMOUNTS FOR THE REGULAR CONTEST! NEW PRIZES FOR THE REGULAR CONTEST ARE:

Junior Division (ages 8-13) 1<sup>st</sup> place \$50.00, 2<sup>nd</sup> place \$35.00, and 3<sup>rd</sup> place \$20.00.

Senior Division (ages 14 and up) 1<sup>st</sup> place \$50.00, 2<sup>nd</sup> place \$35.00, and 3<sup>rd</sup> place \$20.00.

  
F. Isaac Muñoz  
Area Extension Agent  
(4-H/Youth)

### Take a Look Inside...

- ❖ New County Fair Rules
- ❖ Beef Roast Tickets
- ❖ Enrollment Reminder
- ❖ Beef Weigh-in Date
- ❖ Livestock Weigh-in Dates
- ❖ Livestock Record Book Evaluations
- ❖ Club Council Rep. Update
- ❖ Fair Junior Superintendents
- ❖ Club Officer Training
- ❖ Club Leader Training
- ❖ Shooting Sports Open House
- ❖ New Club with a Historical Name
- ❖ Beef Brand Inspections
- ❖ A Message from Heidi
- ❖ Club Officer Training
- ❖ Programs for Sheep and Goats
- ❖ County Council Meeting
- ❖ Horse Leaders Council Meeting
- ❖ Retinal Imaging

Read On.....➔

## NEW RULES FOR COUNTY FAIR!

- Market animals to be exhibited in the Delta County Fair must be identified by an ear tag. Members of a sub-committee of the Delta County Fairboard will tag all animals.
- To be eligible for competition animals must have been the property of the exhibitor prior to showing them at the Fair: Beef - 180 days; Swine - 90 days, Goats/Sheep – 60 days.
- Market Beef are required to be weighed and tagged at the initial weigh-in.
- Market swine, sheep and goats will be tagged at the initial weigh-in; however members may choose not to weigh these animals at that time.
- Rate of Gain on market animals will be calculated to the hundredth for Rate of Gain awards.
- If a member chooses not to weigh their swine, sheep or goat at the initial weigh-in they are not eligible for the rate of gain award and will receive a zero for the Premier Exhibitor rate of gain category.

## BEEF ROAST TICKETS

2009 Beef Roast tickets are available for pick up by club *Organizational Leaders* at the Delta Extension Office. Proceeds from the sale of tickets support local 4-H activities. Leaders - *please* be sure to stop by and get your tickets! Prices for tickets will be \$8.00 for adults and \$4.00 for children under 12 years old. Prices will be the same at the door.

Don't forget! There are two ticket sales contests. One for clubs, and another for Junior/Senior 4-H members. Prizes for these contests will be announced in future newsletters so please keep an eye out for that information.

## ENROLLMENT REMINDER

ALL 4-H leaders, whether they are returning or new, Organizational Leaders or Project Leaders, need to be sure to enroll in 4-H for the current year! You must enroll to receive manuals, newsletters, and other information.

ATTENTION: Delta County 4-H members **MUST** officially drop livestock (which includes rabbits & Poultry), dog, and horse projects on or before May 1, 2009. Members who do not submit an enrollment form to the *Delta County Extension Office* showing that they have dropped one or more of these projects, and who do not turn in a completed record book, will not be allowed to enroll in that project area the following year.

## BEEF WEIGH-IN DATE

The Delta County Beef-Weigh-in will be held Saturday, February 7, 2009 from 10:00 AM to 12:00 PM, at the Delta County Fairgrounds in Hotchkiss. 4-H members who want to enroll in the market beef project must have their enrollment for this project in to the Extension Office by 4:30 PM, on Monday, February 2, 2009.

### LIVESTOCK WEIGH-IN DATES

#### Beef Weigh-in

February 7, 2009  
10:00 AM – 12:00 PM



#### Swine Weigh-in/Tag-in

April 11, 2009  
7:00 AM – 10:00 AM



#### Sheep/Goat Weigh-in/Tag-in

May 5, 2009  
5:00 PM – 7:30 PM



## CLUB ORGANIZATIONAL & PROJECT LEADERS!

**Have YOU enrolled?** Just a reminder that ALL leaders need to enroll or re-enroll every year - this includes Organizational, Project, and Resource leaders! Be sure to fill in your enrollment forms with all appropriate information (including project names and project CODES).

Organizational Leaders – be sure to watch your e-mail for your bi-weekly reminder memo. It will have the most current information you need for your club meetings!

## LIVESTOCK RECORD BOOK EVALUATIONS

In 2009, Delta County 4-H will be implementing a new procedure to evaluate 4-H livestock record books. The criteria will be the same, but the way we actually review the record books will be different. Up to now, we have requested the cooperation of area judges to help us evaluate these record books to make sure they all comply with the 70% completion requirement. These judges take these record books home and return them to the extension office within a two to three week period. Judges receive a \$2.00 compensation for every record book they evaluate.

The new method, which in fact is common to many other counties, is to ask for the cooperation of a group of local livestock leaders, superintendents, and other adult volunteers with expertise in 4-H livestock projects, arrange for them to meet for an evening, go over an orientation of how to conduct the evaluation, and get all the record books evaluated at one time. In addition to finishing this task on a timely manner, we expect to also have more consistency in the way the record books would be evaluated.

At this time, we're inviting 4-H leaders with expertise in the various livestock projects, to please call Isaac at 874-2198 so we can add you to the list of judges who will be assisting us in this task. The expected date to evaluate these books is mid September.

## PICK UP A MEMBER GUIDE

We have created a 4-H Members Guide that covers some of the "mystery" parts of the 4-H Program. We have tried to include information at every step or level of the 4-H Program (county, district, state, and national). Information included covers enrollment fees, meetings, newsletters, projects, record books, contests, trips, and many other important topics. This is a great little guide for both new and returning members. We encourage you all to pick up this guide from your local Extension Office!

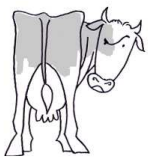


## HIGHER EDUCATION SCHOLARSHIPS

Every year we receive inquiries about scholarships available through 4-H. At the state level, there are quite a number of scholarships offered. Simply go to <http://4hweb.ext.colostate.edu>, click on Events & Opportunities, click on Scholarships and you will find a complete list of scholarships as well as applications. If you need a letter of recommendation or any forms from the Extension Office, please allot plenty of time for us to provide that for you. Good luck!

## JUNIOR SUPERINTENDENTS

The Fairboard would like to encourage Senior 4-H and/or FFA members to become Jr. Superintendents at the fair. It will include livestock and Heritage Hall projects. These Jr. Superintendents will be asked to help the adult superintendents with weigh-in, fair set-up, stalling animals, placement of projects, clean-up, etc. Your services will be needed before, during, and after fair. We will make sure you have time to take care of your own projects and enjoy fair, however. Please contact Dorothy Jean Mergelman at 856-6676 by the **deadline of February 15, 2009** for more information.



## BEEF BRAND INSPECTIONS

Beef members! Please be sure to have your brand papers done before the initial weigh-in in February. Contact your brand inspector and he will be happy to help you. Randy Shetley at 874-5558 or Art Flynn at 240-9595.

## RETINAL IMAGING OF STATE FAIR LIVESTOCK PROJECTS

In 2009, Delta County will join a number of counties in Colorado in the use of retinal imaging to identify all beef, goat, and sheep state fair market projects. Similar to previous years, members planning to nominate any of these projects for state fair will need to fill out a nomination card at the initial weigh-in/tag-in. At a later date to be announced, these animals will need to be taken to a location to be identified with the actual retinal scanning probe.

A retinal scan is a biometric technique that uses the unique patterns of an animal's retina to identify them. Because of the complex structure of the capillaries that supply the retina with blood, each animal's retina is unique. Research has proven that this technology is a superior method for positively identifying these animals. The retinal scanning system to be used will allow us to document time, date, and location of animals enrolled. A record of the animal's retina scan will be kept on file. When the animal arrives at state fair, officials will be able to scan the animal again to verify that it is the same animal that was originally enrolled.

More details about this program will be provided to members planning to nominate animals for State Fair.

## CREATIVE PET NAMES

Those who like to think outside the box might be interested in the following unusual names for cats and dogs:

### Dogs:

Rush Limbark  
Sirius Lee Handsome  
Rafikikadiki  
Admiral Toot  
Alley Kazamm

### Cats:

Edward Scissorpaws  
Optimus Prrime  
Buddah Pest  
Snoop Kitty Kitty  
Sparklemonkey

And for those of you who like to stay inside the box:

### Dogs:

Max  
Bailey  
Bella  
Molly  
Buddy

### Cats:

Chloe  
Tigger  
Tiger  
Smokey  
Shadow



## DELTA COUNTY 4-H COUNCIL GOALS - 2009

The Delta County 4-H Council Executive Committee met in January, 2009. The purpose of the meeting was to review the 2008 year and set goals for 2009.

The main goal that was set for 2009 will be to increase the level of participation by members, leaders and parents in Delta County 4-H Council. The reason for establishing this key goal is based on the need to keep all 4-H families informed of opportunities available to them through 4-H. The Council wants to keep everyone better informed about educational trainings, leadership development programs, field days, Beef Roast, County & State Fairs, awards and scholarships, council elections, club leader and member officer trainings, horse clinics, and Cloverbud camps, which are all planned and discussed at the Delta County 4-H Council meetings. Everyone is welcomed to attend any and all Council meetings.

Starting in February, 2009 Council Officers will be visiting all 4-H clubs to explain Club Officer Training and invite members, leaders, and parents to County Council meetings.

# SPOTLIGHT ON PROJECTS

## GEOSPATIAL

### CREATIVE ARTS

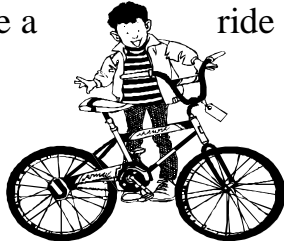


Tri River Area 4-H offers a group of projects for members interested in drawing, painting, sculpture, crafts, model kit building, computer generated art, scrapbooking, creative writing, and many other forms of art. Since these are county projects they are not listed on the state project form, but they are available to our members! Contact the Extension Office at 874-2195 for more information.

### BICYCLE

Did you receive a new bicycle over the holidays? Are you thinking about getting a new bike this spring? Then the Bicycle project may be a ride you want to take!

This project is designed to help young people learn bicycle care, maintenance, safety, riding techniques, road courtesy, bicycle repair, and much more!

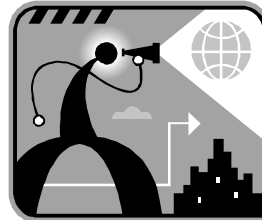


### SPORTFISHING



Make this your year to try the Sportfishing project. As a member you will learn casting methods, selection of tackle, water quality, learn how to tie fishing knots, and much, much more!

This new project offers a set of learning experiences and opportunities that allow members to increase their knowledge, skill, and understanding of map-making, finding out where they “are” in the world, understanding and reading maps, and using their GPS system.



### COMPUTERS

This multi-media curriculum uses a combination of interactive CD and web-based activities. The first level is appropriate for beginners with little or no experience, just access to a computer with a CD drive. Second and third levels are designed to be used with Internet access. Youth are encouraged to start at the level that relates to their level of experience.



### FOODS & NUTRITION

Step into the kitchen for a great learning experience! The Foods and Nutrition projects offer a variety of learning experiences from learning to shop wisely, planning and preparing meals, learning more about nutrition, the basic food groups, and understanding food and kitchen safety. Join this project today!

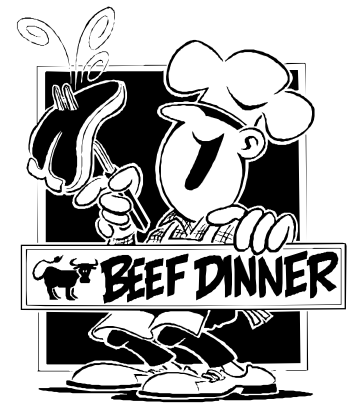


# DELTA COUNTY 4-H BEEF ROAST CHALLENGE

We **challenge each** of our **Delta County 4-H members** and/or leaders **to sell at least 20 adult tickets** and **10 child tickets** for the upcoming 4-H Beef Roast. The Beef Roast will be held March 8, 2009 from 12:00-3:00 PM at Delta Middle School and Hotchkiss High School. We are sure that each of you knows at least 20 adults. Teachers, relatives, community leaders, day care providers, fast-food workers, neighbors, friends - the possibilities are endless.

It's really not so hard - just take some tickets with you everywhere you go and the next thing you know you've sold ten, twenty or even a hundred tickets. Don't forget - **you could win one of our contests!** **Cash prizes** are always good - right?! **AND** your club can win a **total sales contest**. This will benefit your club directly which could lead to your club doing some kind of fun activity. How cool would that be? In addition, **every member who meets this challenge** will receive a **special prize**. Nope, we're not telling what it is - you will have to **meet the challenge** to find out!

In short, club leaders have lots of tickets for you to sell. If you don't have tickets, get them from your leader today! Let's make this a record-breaking year for sales. It will truly benefit each and every one of you!



*People will be  
hungry on March 8th!  
Help them out - sell  
them some Beef Roast  
tickets!*

