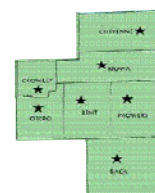




**Your front door
to research,
information,
and expertise of
your land-grant
university.**

Quarterly Report



To: Board of County Commissioners

This quarterly report summarizes major educational programming in the fourth quarter of 2008 from Southeast Area *Extension*. We are grateful for the continued support of the Counties. If you have any questions, suggestions or would like more specific information about these or other Extension programs, feel free to meet with any member of our staff.

Southeast Colorado Bull Test

This is the 35th year that the Southeast Extension Area staff has been involved with the Southeast Colorado Bull Test Association. For this year, there are 44 bulls in the test, representing six breeds from ten producers. The breeds entered include: Polled Hereford, Horned Hereford, Angus, Salers, Irish Blacks, and British Whites.

The bull test offers a way for participating producers to obtain information on their bulls and the efficiency of their breeding programs. Along with the feed efficiency and weight gain data collected, ultra-sound carcass information is obtained on the individual bulls. Scrotal measurements are obtained at the beginning of the test and at the end. A correlation has been shown between scrotal size and attainment of breeding maturity. Other measurements taken include hip height which is used to calculate individual frame scores.

This year we also were able to obtain retinal scans on all of the bulls. This is new technology that provides a positive identification of an animal that cannot be altered. A light is shined through the pupil of the eye to illuminate the vein pattern on the retina. This pattern is specific to each animal, similar to a finger print. Each eye on an animal also has its own distinct pattern. These patterns are still obtainable up to nine hours after death. If there is a question about an animals identification and a previous scan has been recorded, a second scan can be taken and compared on a software program. Currently, three agents in the Southeast Area are certified to use the retinal scan equipment.

Inside this issue:

Agriculture & Natural Resources	1-3
4-H Youth Development	4
Family & Consumer Science	5-6
Director Note	6



Agriculture and Natural Resources



Wheat Outlook

2009 has arrived, which means we can finally put 2008 in the books. Like many others, agriculture producers in Southeast Colorado are happy to see the year completed and are looking forward to what will hopefully be a better year in 2009.

The final quarter of 2008 found Scott Brase finalizing the planting of the various wheat test plots throughout the region. All of the plots emerged well and are in good to excellent condition. Preliminary evaluations have been recorded, and if timely moisture is received, we can expect very good data.

While most of the wheat in the region is in good condition, there have also been indications of potential problems later in the growing season. Eastern portions of the area along the Kansas border, have experienced an outbreak of Hessian fly, along with high numbers of Russian Wheat aphid, and some early signs of Leaf and Stripe rust. This is primarily due to the large amount of late summer and early fall moisture which was received in that region. While we are familiar with the Russian Wheat aphid and the rust infections, the Hessian fly is a relatively new concern to Colorado. Many acres have been treated for the insect, which can be devastating to the wheat crop. We are currently evaluating the effectiveness of the treatment as well as monitoring further spread of the insects. Due to the lack of research of the Hessian fly in Colorado, we are taking a wait and see approach to the problem. We are not sure if the regions climate will sustain the fly maggots through the winter. Should they survive, area producers should be prepared to act quickly. CSU will continue to monitor the situation, and will provide area producers with recommendations and options should the need arise.

Scott Brase has and is continuing to work in conjunction with representatives from USDA's FSA, NRCS, and Rural Development, along with representatives from the Colorado Land Use office, and Colorado Division of Wildlife, to address potential issues with the release of Conservation Reserve Acreage. An educational forum is being planned for a date in February to provide all stakeholders with potential ramifications as well as possible options.

Drought Management Field Day

Drought is an ever-present threat for ranchers in southeastern Colorado. To help producers mitigate this threat, CSU Extension held a drought management and monitoring field day at the Edmundson Ranch north of Sugar City on October 30, 2008. Dr. Roy Roath, CSU Extension Range Specialist, lead local ranchers in discussing and understanding the effects of drought and how to lessen its effects.

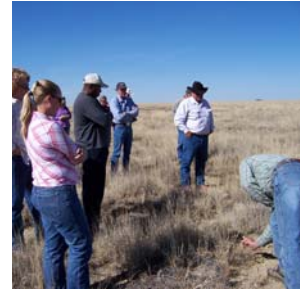
Dr. Roath began research on the ranch in 2004 to study the effects of drought on current grass production, species diversity and to monitor recovery. In conjunction with the

NRCS, Extension assisted in developing a management plan to lessen the effects and speed recovery following drought. This ranch has been established as a model for other ranches in the area and Extension has held other field tours on the ranch over the past several years.

The Field Day highlighted progress that has been made on the Edmundson Ranch and also provided on-the-ground training for ranchers to monitor their own land. Participants engaged in discussions about drought and were able to see how the land responds to grazing management. They toured areas of the ranch where improvements can be easily noted through photographs and other areas where improvement can still occur. Those attending also learned how to read indicators from the land to determine if their grazing strategy is improving range conditions or if changes should be made to their management plan.

John Valentine with the Colorado State Land Board was also present to discuss opportunities available to ranchers leasing state land as part of their operation. Stewardship leases are an alternative to the traditional lease. The stewardship lease has many benefits, but also requires more intense management and monitoring plans. The Field Tour helped ranchers see how some of the required management tools for this type of lease can be implemented on a working ranch.

Overall, the day was a success with those attending having an opportunity to learn more about drought risk management and reading the land. It didn't hurt that it was a perfectly sunny day and lunch was provided.



Field Day at Edmundson Ranch



Fifth Annual Arkansas Valley Farm/Ranch/Water Symposium & Trade Show

The Fifth Annual Arkansas Valley Farm/Ranch/Water Symposium and Trade Show will be held February 5, 2009, in Rocky Ford. Extension staff has been busy planning another great program this year. Main topics include the 2008 Farm Bill, bio-diesel production from oil seed crops, and carbon sequestration. The Symposium will also provide updates regarding country of origin labeling, animal feeding operations, irrigation efficiency rules, latest research report for the lysimeter at the Arkansas Valley Research Center, as well as a legislative update from John Stulp, Colorado Commissioner of Agriculture.

4-H



4-H Achievement Banquets

County 4-H programs closed the end of the year by holding their annual 4-H achievement banquets. These banquets are held to recognize the excellence that individual 4-H members and their clubs demonstrated throughout the year. The banquets also provide an opportunity to recognize leaders, sponsors, and supporters. Whether they have donated time, money, or labor, without their generosity we could not have the outstanding programs and achievements that allow us to strive for our motto “Making the Best Better”. The following people were honored by their county 4-H programs as outstanding supporters:

- Baca - Gayla and Dennis Thompson
- Bent - Cary and Patti Robb, Pat Spitz, Roxanne Davis
- Cheyenne - Steve and Deb Short
- Crowley - Dwight and Margie Gardner
- Kiowa - Dawn James
- Otero - Joe and Janie Petramala
- Prowers - Mark Carrigan

The Southeast Area wants to thank these people for their time and commitment to 4-H and everyone who benefited from their generosity.

4-H Rises to the Raffle Occasion!

The Southeast Area once again has risen to the top in selling raffle tickets to benefit the Colorado 4-H Foundation.

Baca County took top honors in the **state** selling 114 tickets, Bent County was in the top five, selling 102 tickets and the Southeast Area sold a combined 353 out of 2,700 tickets for the FORD F-150 donated by the Rocky Mountain FORD stores.

Through the raffle over \$55,000 was raised to support educational activities and events for Colorado 4-H members and volunteers. Five dollars of each ticket sold was also returned to the County Office for their programs. In the Southeast Area, 4-H Clubs were given the \$5 from each of the tickets they sold. “In Baca County that amounted to \$570 that we returned to the 8 clubs for their own club work,” says 4-H Extension Agent Deborah Lester. “I’m thrilled that we can return this money to the kids that did the work for use in their own clubs. It’s definitely a win-win for us,” she adds.

The winner of the truck raffle is a 22 year 4-H Leader in LaPlatta County, Barbara Barnes from Durango. The truck was delivered to the Barnes in mid-October after the drawing was held at the 4-H Gala in the Wings Over the Rockies Air and Space Museum in Denver.

The Colorado 4-H Foundation plans to do another raffle in 2009.



Holiday Fun and Learning

Healthy Holiday Lifestyles was the focus of a program presented by Kaye Kasza to a luncheon wellness group in Bent County. She emphasized making small lifestyle changes that have a positive impact on wellness, organized around eating a variety of foods in moderation, and increasing activity. While the title included “Holiday”, the information is appropriate year-round.

Holiday Cooking on a Budget was the focus of a program presented by Jean Justice to parents at the Rocky Ford CDS center. She emphasized how to make a traditional holiday meal when economic times are hard on the budget. There was discussion of comparison shopping, buying store brands rather than name brands and making things from “scratch” rather than pre-packaged foods. Emphasis was also placed on good nutrition and food safety.

Christmas Gifts from the Kitchen is the title of the annual microwave candy workshop given by Jean Justice. Homemade candies are always a popular item for the holiday gift giving. The workshop is a hands-on activity to demonstrate the use of a microwave to save resources such as time and energy. Nutrition and food safety are also part of the presentation. This has been a fun learning experience for many years.

B.L.I.S.S. (Building Life, Independence and Self-Sufficiency)

The B.L.I.S.S. Project is organized and offered through Tri-County Family Care Center in Rocky Ford. This fall a 3rd series of six week classes were offered in Rocky Ford. Participants were for the most part referred from Otero County probation, Southeast Mental Health or TANF. As in the past Jean Justice presented 3 hours of the 18 hours of education which focused on nutrition.

Health Fairs

Healthy Aging for all Ages was the focus of the Fall Health Fair in Lamar. Kaye Kasza provided nutrition and wellness information to about 140 people at the fair. Materials focused on health issues impacting older persons because most participants were senior citizens. The Lamar Senior Resource Center was the sponsor of the Health Fair

Frequent and thorough hand washing is one of the best defenses against the spread of illness. At a Safety Fair sponsored by Child Development Services in Las Animas, Kaye Kasza taught hand washing to about 100 preschoolers, their siblings and parents. She used liquid containing plastic simulated germs. The liquid was rubbed onto the youth’s hands and then they washed their hands as usual. An ultra-violet lamp illuminated the simulated germs, making a very vivid demonstration of cleaning effectiveness. Kasza also used this opportunity to distribute 4-H promotional materials.

Family & Consumer Science





COLORADO STATE UNIVERSITY
EXTENSION - SOUTHEAST AREA

411 North 10th Street
P. O. Box 190

Phone: 719-254-7608
Fax: 719-254-7650
E-mail: jean.justice@colostate.edu

We're on the Web:

www.extension.colostate.edu/SEA

A note from the Area Director—Jean E. Justice

This is the final report for our 2008 Program Year and I hope you all agree that the Extension staff in the Southeast Area has provided some pertinent and valuable programming this past year.

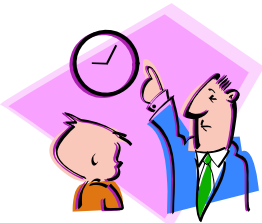
As we give you our final program report for 2008, I'd like to take this opportunity to wish you all a great New Year for 2009. Extension in the Southeast Area is beginning the New Year in a positive manner with the news that our area is about to be fully staffed for the first time in about 5 years. On January 20th, Lacey Mann will be joining our ranks as a 4-H agent in Prowers/Bent Counties. We will officially introduce you to her in our first quarterly report for 2009.

It has been a long and difficult process but I feel very good about the quality of agents we have representing Extension in the Southeast Area. We have brought in young staff with lots of new ideas, enthusiasm and knowledge to share with our communities.

We look forward to providing each of our communities with needed educational opportunities in the coming year. Once again thank you for support of Extension.

Colorado State University, U.S. Department of Agriculture and Colorado counties cooperating. Extension programs are available to all without discrimination. The information given herein is supplied with the understanding that no discrimination is intended and no endorsement by Colorado State University is implied.

Better Kid Care



In October a Better Kid Care was presented by Jean Justice in both Otero and Bent Counties with approximately 25 participants. The workshop was "What Does "Time" Mean to Children?" What do children of different ages know and understand about time? Why do children and adults struggle when it's time to clean up? Participants learned ways to build on children's understanding of "yesterday", "today", and "tomorrow". An important key to children's readiness for learning about concepts of time lies in the stages of brain development. This workshop gave a brief description of Jean Piaget's theories: conception of numbers and development of intelligence. Both of these offer important considerations for when and how children learn about time.

The Better Kid Care program allows area Day Care Providers to earn needed continuing education hours in order to keep their license current.