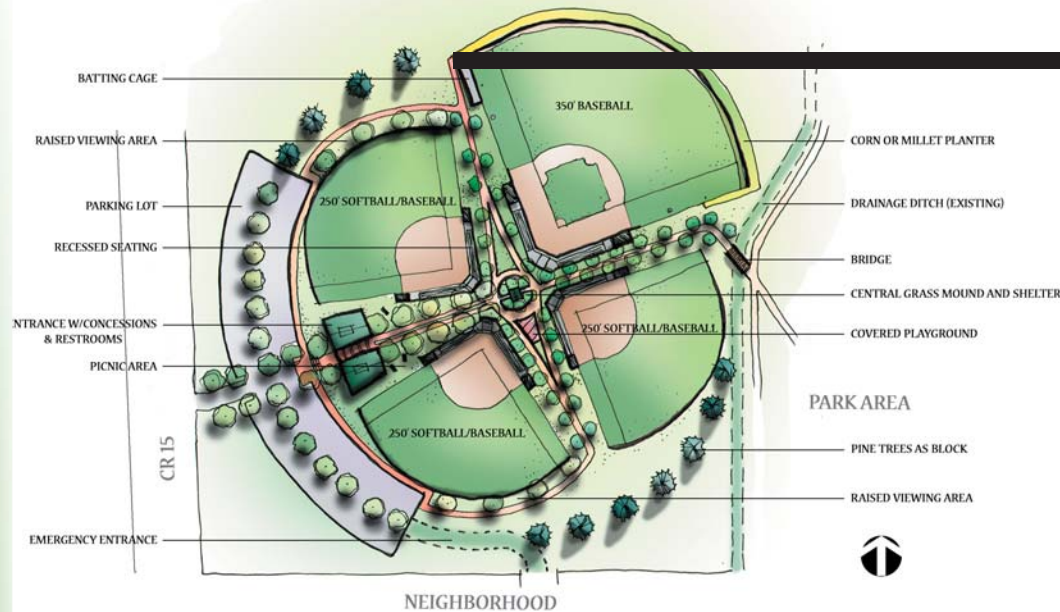


# JOHNSTOWN BALL PARK

## JOHNSTOWN, COLORADO

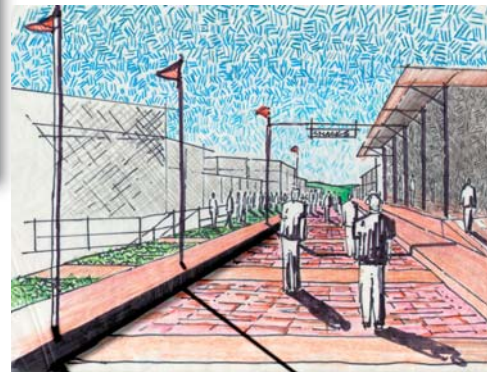
### Landscape Architecture



The Thompson Rivers Parks and Recreation District had ideas for a ball park complex. They had the land but they didn't have an understanding for how the ball diamonds could be located on the site, nor how much the effort would cost. The CSU-DOLA program helped the District look at a number of alternative layouts on the property. They looked at architectural styles and helped the District understand what must be committed to finish the eventual buildout of the project.

Phased construction options were proposed and the final layout reflected the ideas of the District and incorporated innovative grading, irrigation and state-of-the-art ball diamond lighting and seating configurations.

The District board was actively involved, assisting the design process by providing insight of what they needed, of what they thought best reflected their community and how they wanted the design to make best use of the site. Ponds to store irrigation water were also incorporated into the site design. Final plans will help direct the District's site architect prepare a complete construction package for the site.



Intern: Caleb Shultz, Landscape Architect  
 Brent Cooper, Landscape Architect  
 Proj. Mgr: Mike Tupa, ASLA  
 Project Timeline: Summer 2004